

Kilkelly Terrace Home

Product Specs

General Description

- Design: Kilkelly 42m² House
- Purpose: Comfortable all-season home designed for modern family life
- Space Utilisation: Optimised room spaces for maximum utility

Insulation and Construction

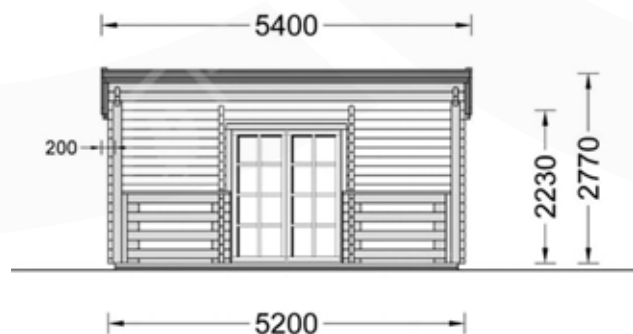
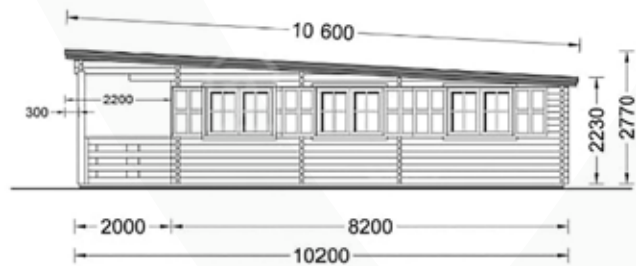
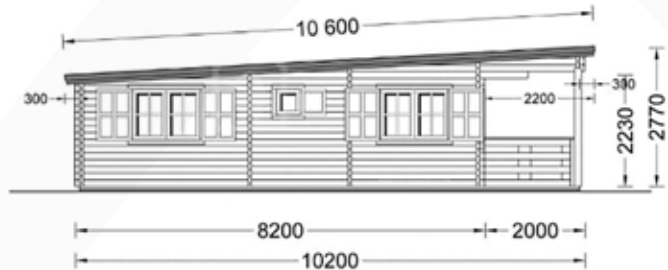
- Wall Boards: 66mm for insulation and soundproofing
- Base: Reinforced for insulation and pipework
- Material: Slow-Grown spruce from sustainable sources
- Roof Boards: 19mm thickness

Features

- Double Glazed doors and windows
- Reinforced base for insulation and pipework
- Slow-Grown spruce from a sustainable source
- 19mm thick roof boards
- Usable Living Space of 37m²
- 10-year warranty

Additional Amenities

- 10m² terrace for outdoor living





Discover the charm of the Kilkelly TerraceHouse - a cosy, all-season home designed with modern family life in mind. Though the home covers a modest footprint, it features an impressive 37m² of actual living space, thoughtfully planned to ensure every square metre is put to good use. What sets this design apart is its focus on comfort and sustainability. The 66mm wall boards offer excellent insulation and soundproofing, whilst the sustainable Slow-Grown spruce construction is both durable and environmentally friendly. For those who love the outdoors, a 10m² terrace provides that crucial outdoor space that's become so essential in today's family life. With features like double-glazed doors and windows, a reinforced base designed to accommodate insulation and pipework, and a reliable 10-year warranty, this home brings you the best of both form and function.